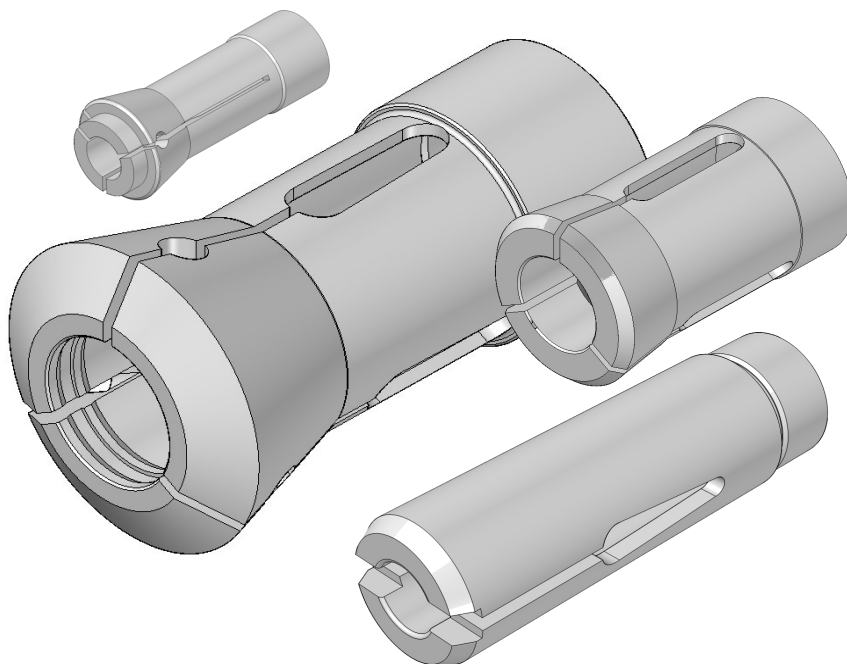


XIV - 1

KLEŠTINY PRO VÍCEVŘETENOVÉ AUTOMATY



NTA s.r.o.
Komenského 365
763 16 Fryšták
www.nta.cz ntaoffice@nta.cz

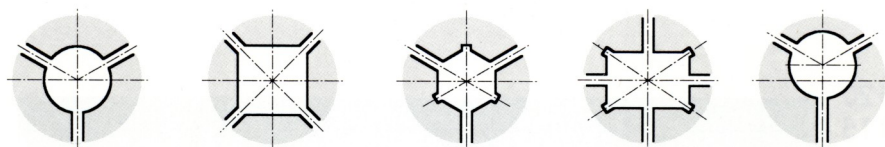
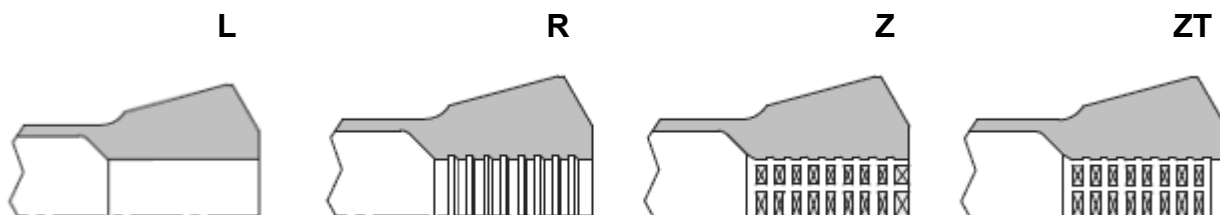


KLEŠTINY PRO VÍCEVŘETENOVÉ AUTOMATY

OBSAH

Provedení upínacího otvoru	3
Zaručená přesnost upínacích kleštín	3
Systém měření přesnosti kleštín	3
GILDEMEISTER	
Upínací kleštiny	4
Podávací kleštiny	5
Kleštiny pro PICK-UP	6
SCHÜTTE	
Upínací kleštiny	7
Podávací kleštiny	8
Kleštiny pro PICK-UP	8
MORI-SAY	
Upínací kleštiny	9
Podávací kleštiny	9
Kleštiny pro PICK-UP	10
WICKMAN	
Upínací kleštiny	11
Podávací kleštiny	12
Kleštiny pro PICK-UP	12
TORNOS	
Upínací kleštiny	13
Podávací kleštiny	13
Kleštiny pro PICK-UP	13
Upínací palce	14

PROVEDENÍ UPÍNACÍHO OTVORU

VARIANTY PROFILU
UPÍNACÍHO OTVORU

- L** Hladký otvor
R Drážky po obvodu
Z Drážky po obvodu i podélně (tvoří zoubky v otvoru)
ZT Zoubky s uzavíracím páskem vpředu (brání vnikání nečistot do kleštiny)

Zaručená přesnost upínacích kleštin

Upínací průměr - ØD	Vzdálenost od čela kleštiny L	Standardní přesnost	Extra přesnost
Od 0,5 do 1	3	0,015	0,005
Od 1 do 1,6	6	0,020	0,005
Od 1,6 do 3	10	0,020	0,008
Od 3 do 6	16	0,020	0,010
Od 6 do 10	25	0,020	0,010
Od 10 do 18	40	0,030	0,015
Od 18 do 24	50	0,030	0,015
Od 24 do 30	60	0,030	0,015
Od 30 do 50	80	0,040	0,020
Od 50	100	0,040	0,020

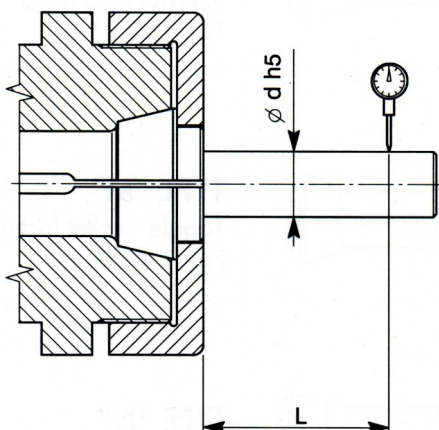
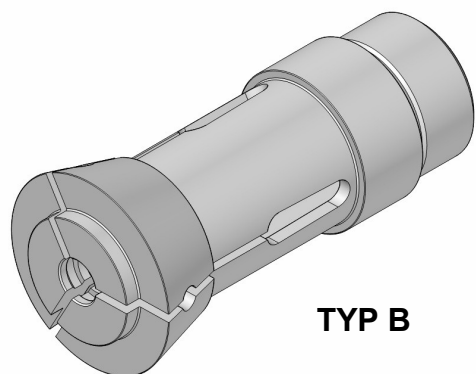


SCHÉMA MĚŘENÍ PŘESNOSTI

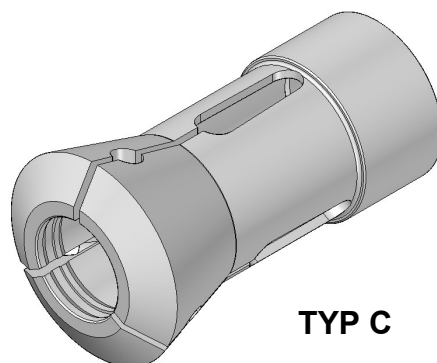
KLEŠTINY PRO VÍCEVŘETENOVÉ AUTOMATY

GILDEMEISTER

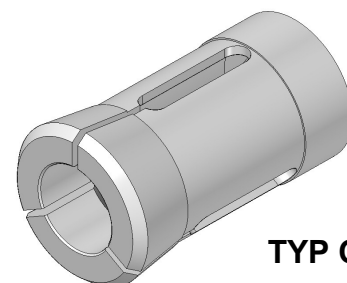
UPÍNACÍ



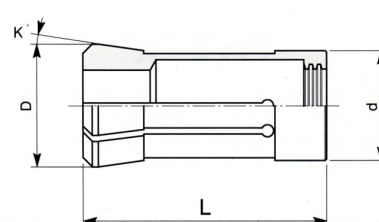
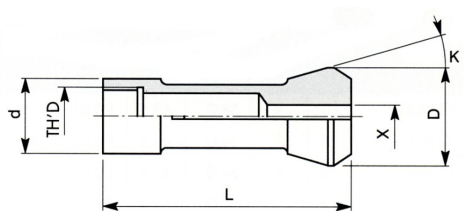
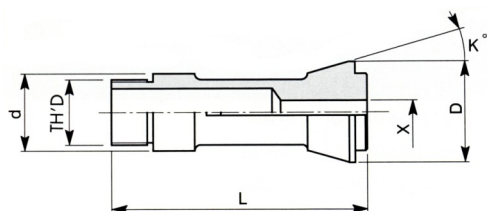
TYP B



TYP C



TYP Q

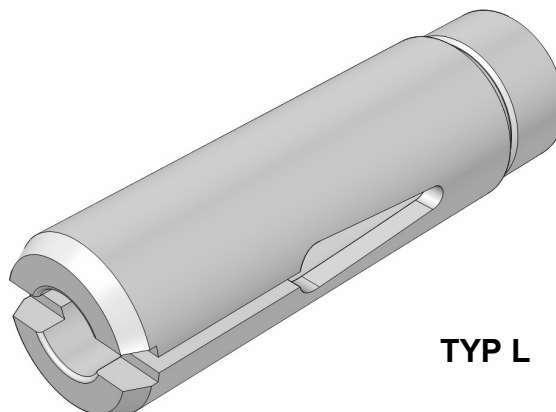


Stroj	Kod	sklad	E - č.	provedení	d	D	L	K°	závit	X max.		
										●	■	■
AS 12	C1102680	-	9013-E	R	26,8	34,0	88,0	15	M24x1 L	12	10	8
GM 16-AC	Q1103000	●	-	R	30,0	39,0	80,5	15	AtcB Ø 27,12x1,5 - 60°	16	14	11
	Q1103001	-	-	Z	30,0	39,0	80,5	15	AtcB Ø 27,12x1,5 - 60°	16	14	11
	Q1103002	●	-	R	30,0	39,0	86,5	15	AtcB Ø 27,12x1,5 - 60°	9	8	8
AS16 AS GS GM 20-6	B1103400	●	9012-E	R	34,0	42,0	90,0	16	M30x1 L	20	17	14
	B1103401	●	9012-E	Z	34,0	42,0	90,0	16	M30x1 L	20	17	14
AS16, AS GS GM 20 V.25, GMC 20 ISM	C1103801	●	9017-E	Z	38,0	45,5	90,0	16	M34,5x0,75 L	25	22	17
GM 26 AC	Q1104101	-	-	R	41,0	53,0	106,0	15	AtcB Ø 37x2,7 - 30°	26	22	18
	Q1104102	-	-	Z	41,0	53,0	106,0	15	AtcB Ø 37x2,7 - 30°	26	22	18
GS 25 V.32	B1104500	-	9046-E	Z	45,0	60,4	164,0	15	M42x1 L	26	22	18
AS 32, GM 32 GM 35-6, GM 35-8, GMC 35 V.35	C1105300	●	9069-E	Z	53,0	69,4	137,0	15	M48x1,5 L	35	31	25
GMC 35 V.40	C1105700	-		Z	57,0	69,4	137,0	15	M52x1,5 L	40	34	28
	C1105701	-		ZT	57,0	69,4	137,0	15	M52x1,5 L	40	34	28
GM 42	C1106403	●	9115-E	Z	64,0	80,5	134,0	15	M59x1,5 L	42	37	30
AS 48	C1107000	-	9132-E	Z	70,0	90,4	167,5	15	M65x1,5 L	48	42	34
AS 67	C1109000	-	9178-E	Z	90,0	115,4	183,5	15	M85x1,5 L	67	55	45

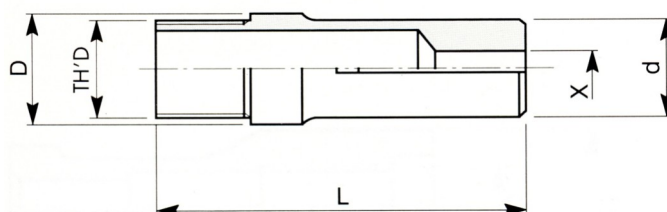
KLEŠTINY PRO VÍCEVŘETENOVÉ AUTOMATY

GILDEMEISTER

PODÁVACÍ



TYP L

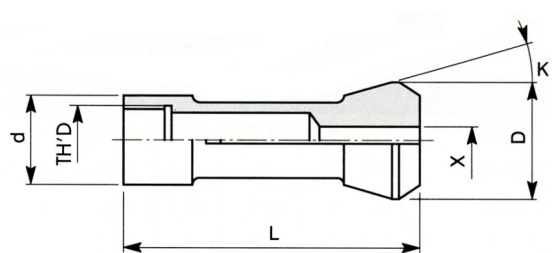
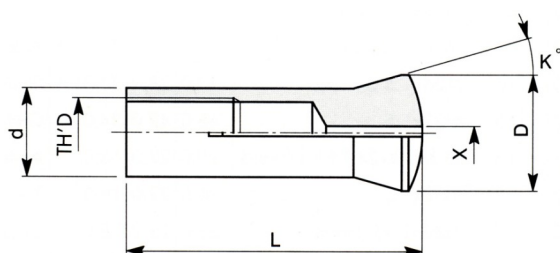
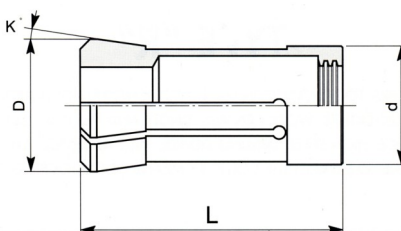
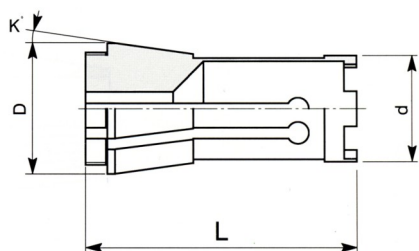
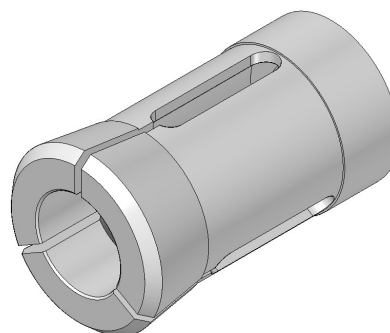
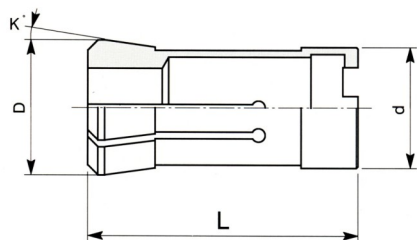


Stroj	Kod	sklad	E - č.	provedení	d	D	L	K°	závit	X max.		
										●	⬡	■
AS 12	L1101950	-	9259-E	L	17,5	19,5	82,0	-	M17x1	12	10	8
GM 16 AC	L1102200	●	-	L	20,0	22,0	86,0	-	M20x1	16	14	11
AS 16, AS GS GM 20-6	L1102500	●	9258-E	L	25,0	25,0	90,0	-	M24x1	20	17	14
AS 16, AS GS GM 20 V.25	L1103050	●	9288-E	L	30,0	30,5	90,0	-	M28,5x0,75	25	22	17
GM 26 AC	L1103140	-	-	R	30,5	31,4	108,0	-	M29,5x0,75	26	22	18
GS 25 V.32	L1103850	-	-	R	37,5	38,5	140,0	-	M36x1	32	28	23
AS 32	L1104121	-	9336-E	R	39,8	41,2	120,0	-	M38x1,5 L	32	28	23
GM 32	L1104122	-	9336-E	R	39,8	41,2	136,0	-	M38x1,5	32	28	23
GM 35-6	L1104123	-	9335-E	R	41,0	41,2	136,0	-	M39x1,5 L	35	31	25
GM 35-6, GM 35-8	L1104124	●	9335-E	R	41,0	41,2	136,0	-	M39x1	35	31	25
GM 42	L1105150	-	9374-E	R	50,2	51,5	136,0	-	M48x1,5	42	37	30
AS 48	L1105700	-	9368-E	R	56,0	57,0	136,0	-	M54x1,5 L	48	42	34
AS 67	L1107750	-	9447-E	R	76,0	77,5	170,0	-	M74x1,5 L	67	58	47

KLEŠTINY PRO VÍCEVŘETENOVÉ AUTOMATY

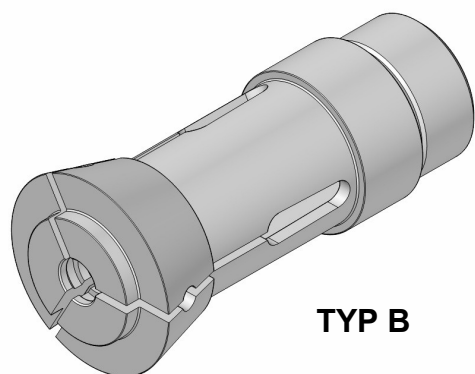
GILDEMEISTER

PICK - UP

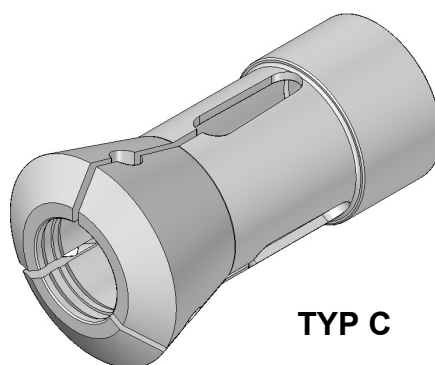


Stroj	Kod	sklad	E - č.	provedení	d	D	L	K°	závit	X max.		
										●	⬡	■
AS 12	C1101580	-	-	L	15,8	22,0	85,0	5	M13x0,75 L	12	11	8
GM 16 AC	Q0001870	●	-	L	18,7	25,0	51,5	8	AtcB Ø21x1,5 - 60°	16	14	11
AS 16	C1102600	●	-	L	26,0	28,5	80,0	6	21,5x0,75	20	17	14
AS GS GM 20-6	C0002800*	●	-	L	28,0	32,0	64,0	8	M24x1,5 L	24	20	16
GMC 20 ISM	Q0002800	●	-	L	28,0	32,0	73,0	8	AtcB	24,5	21	17
GS 25 V.32	C1103701	-	-	L	37,0	45,0	78,0	15	M30x1,5	32	28	22
GM 26 AC	Q0002870	-	-	L	28,7	35,0	64,5	8	AtcB Ø31x1,5 - 60°	26	22	18
AS 32	C0003900	●	-	L	39,0	44,0	90,0	8	M34x1 L	32	28	23
GM 32, GM 35-6	C0003901	-	-	L	39,0	44,0	90,0	8	M34x1 L	32	28	23
GM 32 GM 35-6, GM 35-8 GMC 35 V.35	Q0003900	-	-	L	39,0	44,0	82,0	8	AtcB Ø11x4	32	28	23
	Q0003901	●	-	L	39,0	44,0	82,0	8	AtcB Ø11x4	32	28	23
GM 42	Q0004700	-	-	L	47,0	52,5	73,0	8	AtcB Ø29x2,7 - 30°	42	36	29
	Q0004701	-	-	L	47,0	52,5	73,0	8	AtcB Ø29x2,7 - 30°	42	36	29
AS 48	C0005600*	-	-	L	56,0	60,0	95,0	8	M51x1 L	48	42	34

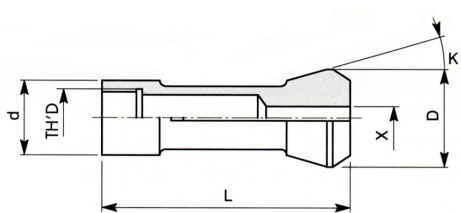
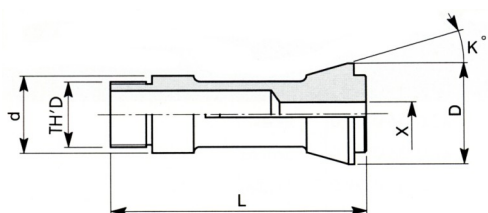
SCHÜTTE
UPÍNACÍ



TYP B

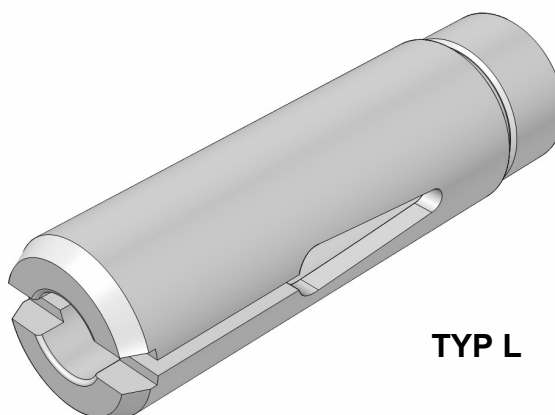


TYP C

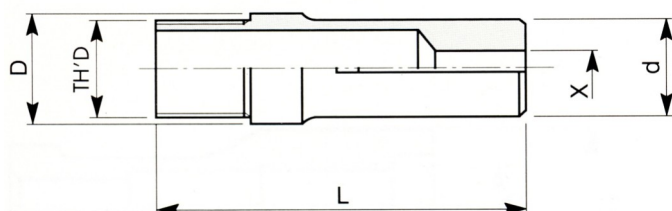


Stroj	Kod	sklad	E - č.	provedení	d	D	L	K°	závit	X max.		
										●	⬠	■
SF 13	B2202500	-	9015-E	L	25,0	36,1	75,0	15	M22x1 L	13,0	11,0	9,0
SE 16, SE 18	B2203200	-	9007-E	L	31,9	42,0	84,0	15	M28x1 L	18,0	16,0	13,0
SG 18, AG 20	B2203204	-	90076-E	L	31,9	42,0	84,0	15	M28x1 L	18,0	16,0	13,0
SG 18, AG 20 Ø > 18mm	C2203202	-	90078-E	L	32,0	41,5	84,0	15	M29x1 L	21,0	18,0	14,0
SF 20	B2203201	-	9016-E	R	32,0	41,5	84,0	15	M30x1 L	20,0	17,0	14,0
VD SD SE 25, AF SF 26	B2204600	●	9049-E	R	46,0	60,3	120,0	15	M40x1,5 L	26,0	23,0	18,0
SD VD 32, AF SF 32	B2205300	●	9070-E	Z	53,0	69,3	136,5	15	M47x1,5 L	32,0	28,0	23,0
AD 40, SF 42	B2206290	●	9112-E	Z	62,9	78,3	157,0	15	M56x1,5 L	42,0	36,0	29,0
SD VD 50, AF SF 51	B2207500	●	9139-E	Z	75,0	97,8	187,0	15	M68x1,5 L	51,0	44,0	36,0
SD VD 63	B2209000	-	9179-E	Z	90,0	115,3	212,0	15	M82x1,5 L	63,0	55,0	45,0

KLEŠTINY PRO VÍCEVŘETENOVÉ AUTOMATY

SCHÜTTE
 PODÁVACÍ


TYP L

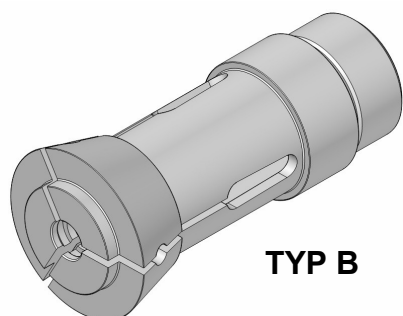


Stroj	Kod	sklad	E - č.	provedení	d	D	L	K°	závit	X max.		
										●	⬡	■
SF 13	L2201960	-	9261-E	L	17,0	19,6	77,0	-	M10x1	13,0	11,0	9,0
SE 16, SE 18	L2202500	-	9255-E	L	23,0	25,0	88,0	-	M23x1	18,0	16,0	13,0
SF 20	L2202700	-	9262-E	L	25,0	27,0	88,0	-	M25x1	20,0	17,0	14,0
VD SD SE 25, AF SF 26	L2203500	●	9282-E	L	33,0	35,0	118,0	-	M33x1,5	26,0	23,0	18,0
SD VD 32, AF SF 32	L2204200	●	9319-E	L	40,0	42,0	130,0	-	M38x1,5	32,0	28,0	23,0
AD 40, SF 42	L2205100	●	9372-E	L	48,0	51,0	158,0	-	M48x1,5	42,0	36,0	29,0
SD VD 50, AF SF 51	L2206200	●	9406-E	L	58,0	62,0	180,0	-	M58x1,5	51,0	44,0	36,0
SD VD 63	L2207701	-	9450-E	L	72,0	77,0	210,0	-	M72x1,5 L	63,0	55,0	45,0

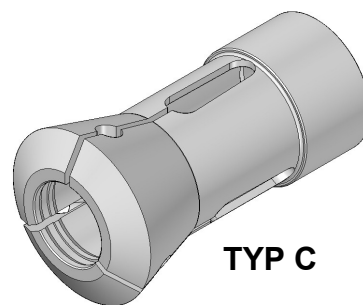
SCHÜTTE
 PICK-UP

Stroj	Kod	sklad	E - č.	provedení	d	D	L	K°	závit	X max.		
										●	⬡	■
SG 18, AG 20	Q2202500	-	-	L	25,0	32,1	91,5	15°10'	-	18,5	16,0	13,0
SE 16, SE 25	C0002800*	●	-	L	28,0	32,0	64,0	8	-	23,0	20,0	16,0
SE 25, SF 26	Q0003550*	●	-	L	35,5	40,0	80,0	8°10'	-	32,0	27,0	22,0
SD 32, AD 40, SF 42	C0003900*	●	-	L	39,0	44,0	90,0	8°	-	32,0	28,0	23,0
AD 40, SF 42, SD VD 50	C0005600*	-	-	L	56,0	60,0	95,0	8°	-	48,0	42,0	34,0
SD 63	Q0007500*	-	-	L	75,0	86,0	150,0	7°30'	-	68,0	59,0	22,0

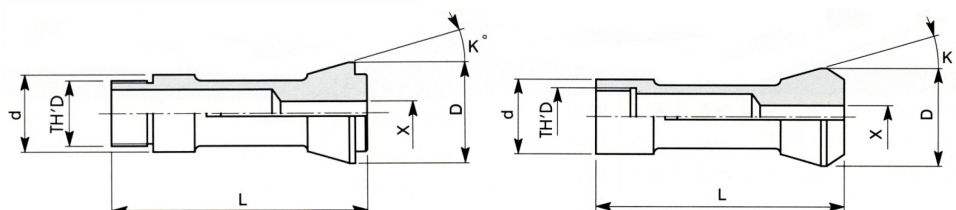
KLEŠTINY PRO VÍCEVŘETENOVÉ AUTOMATY

MORI SAY
 UPÍNACÍ


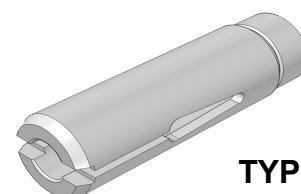
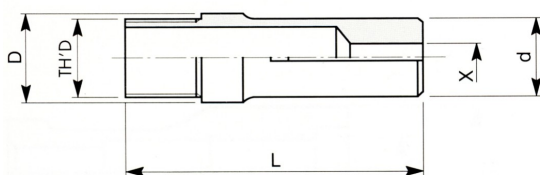
TYP B



TYP C



Stroj	Kod	sklad	E - č.	provedení	d	D	L	K°	závit	X max.		
										●	⬡	■
SAY 20	B1103400	●	9012-E	R	34,0	42,0	90,0	16	M30x1L	20,0	17,0	14,0
	B1103401	●	9012-E	Z	34,0	42,0	90,0	16	M30x1L	20,0	17,0	14,0
SAY 25, TM 626	C1204130	●	9034-E	Z	41,3	54,5	132,0	15	Ø37,8x24záv"L	25,0	22,0	18,0
SAY 32	C1105300	●	9069-E	Z	53,0	69,4	139,0	15	M48x1,5L	35,0	31,0	25,0
	B2205300	●	9070-E	Z	53,0	69,3	136,0	15	M47x1,5L	32,0	28,0	23,0
SAY 42	B2206290	●	9112-E	Z	62,9	78,3	157,0	15	M56x1,5L	42,0	36,0	29,0
SAY 51	B2207500	●	9139-E	Z	75,0	97,8	187,0	15	M68x1,5L	51,0	44,0	36,0
SAY 57	C1207680	-	9142-E	Z	76,86	95,5	181,0	15	Ø72,46x22záv"L	57,0	49,0	40,0
SAY 67	C1209200	-	-	Z	92,07	111,0	165,0	15	Ø85,72x18L	66,0	57,0	46,0
	C1109000	-	9178-E	Z	90,0	115,4	183,0	15	M85x1,5L	67,0	55,0	45,0

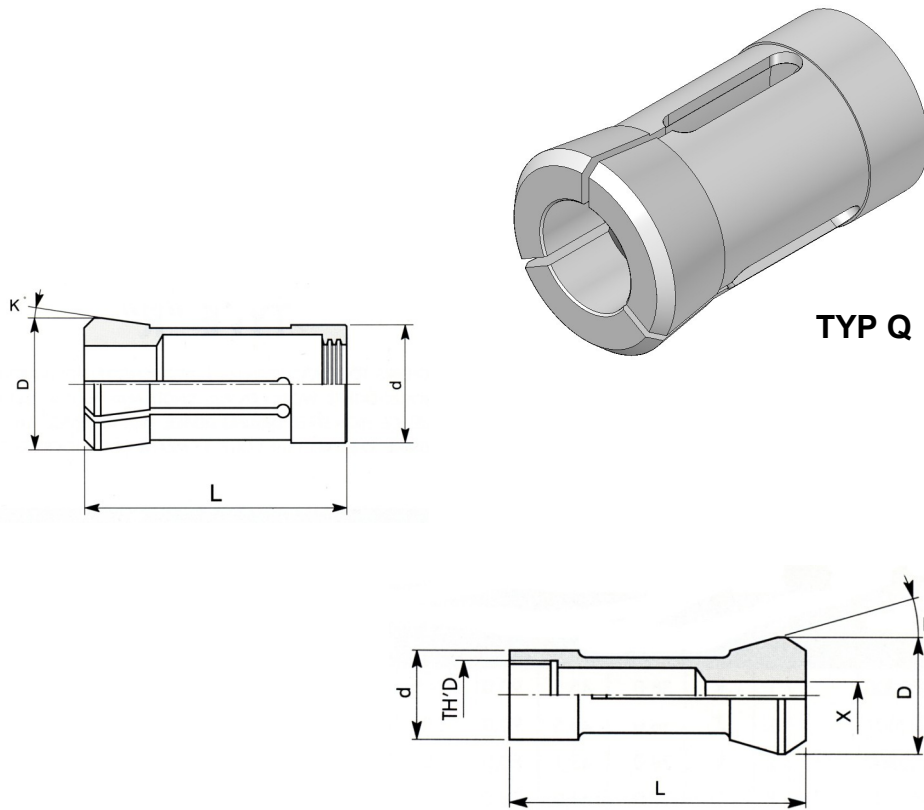
MORI SAY
 PODÁVACÍ


TYP L

Stroj	Kod	sklad	E - č.	provedení	d	D	L	K°	závit	X max.		
										●	⬡	■
SAY 20	L1102500	●	9258-E	L	25,0	25,0	90,0	-	M24x1	20,0	17,0	14,0
SAY 25, TM 626	L1203190	●	9276-E	L	31,0	31,9	133,0	-	Ø30,07x24záv"L	25,0	22,0	18,0
SAY 32	L1104121	●	9336-E	R	39,8	41,2	136,0	-	M38x1,5L	32,0	28,0	23,0
	L2204200	●	9319-E	L	40,0	42,0	130,0	-	M38x1,5	32,0	28,0	23,0
SAY 42	L2205100	●	9372-E	L	48,0	51,0	158,0	-	M48x1,5	42,0	36,0	29,0
SAY 51	L2206200	●	9406-E	L	58,0	62,0	180,0	-	M58x1,5	51,0	44,0	36,0
SAY 57	L1206510	-	9409-E	L	64,3	65,0	171,5	-	Ø65,509x22záv"L	57,0	49,0	40,0
SAY 67	L1207600	-	-	L	74,0	76,0	179,0	-	Ø73x24záv"L	66,0	47,0	46,0
	L1107750	-	9447-E	R	76,0	77,5	170,0	-	M74x1,5L	67,0	58,0	47,0

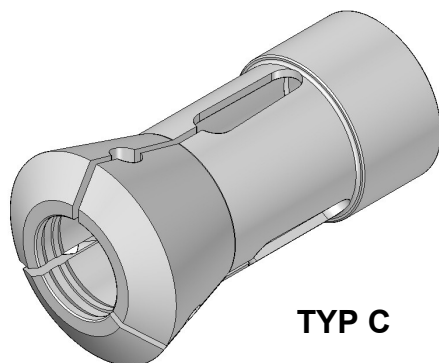
KLEŠTINY PRO VÍCEVŘETENOVÉ AUTOMATY

MORI SAY
PICK-UP - AUTOR

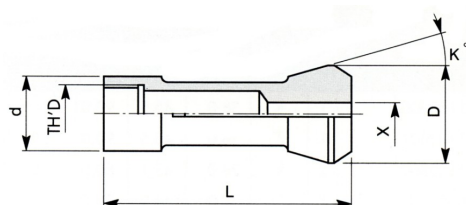


Stroj	Kod	sklad	E - č.	provedení	d	D	L	K°	závit	X max.		
										●	⬡	■
SAY 20	C0002800	●	-	L	28,0	32,0	64,0	8	M24x1,5L	24,0	20,0	16,0
	C0002801	-	-	L	28,0	32,0	64,0	8	M24x1,5L	24,0	20,0	16,0
SAY 25 TM626, SAY 32	Q0003550	●	-	L	35,5	40,0	80,0	8	AtcB Ø27x2,7 - 30°	32,0	27,0	22,0
	Q0003551	-	-	L	35,5	40,0	80,0	8	AtcB Ø27x2,7 - 30°	32,0	27,0	22,0
SAY 42	Q0004700	●	-	L	47,0	52,5	73,0	8	AtcB Ø29x2,7 - 30°	42,0	36,0	29,0
	Q0004701	-	-	L	47,0	52,5	73,0	8	AtcB Ø29x2,7 - 30°	42,0	36,0	29,0

KLEŠTINY PRO VÍCEVŘETENOVÉ AUTOMATY

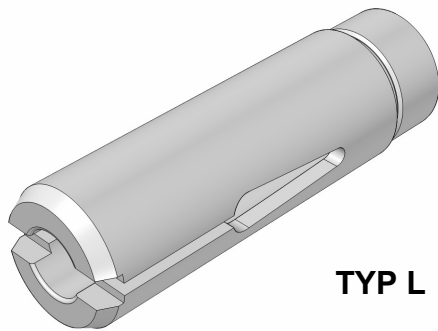
WICKMAN
 UPÍNACÍ


TYP C

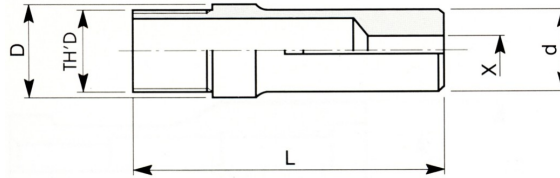


Stroj	Kod	sklad	E - č.	provedení	d	D	L	K°	závit	X max.		
										●	⬡	■
1" - 6 M	C1204130	●	9034-E	Z	41,3	54,5	132,0	15	Ø37,8x24záv"L	25,0	22,0	18,0
1" - V.30	C1204920	-	-	Z	49,21	60,72	110,0	15	M44,2x1L	30,0	26,0	21,0
32 MM-8 MC	C2505070	-	-	Z	50,72	63,57	109,5	15	Ø46,0375x18L	31,0	27,0	22,0
1" 3/8-6 M	C1205540	-	9072-E	Z	55,47	67,0	117,0	15	Ø50,927x22L	36,0	31,0	25,0
1" 3/4-6 M	C1206420	-	9111-E	Z	64,21	78,5	127,0	15	Ø60,45x16L	44,0	38,0	31,0
2" 1/4-6 M	C1207680	-	9142-E	Z	76,86	95,5	181,0	15	Ø72,46x22záv"L	57,0	49,0	40,0
2" 1/4-5 M	C1207770	-	-	Z	77,72	89,0	152,5	15	Ø73,02x16L	57,0	49,0	40,0
2" 5/8-6 M	C1209200	-	-	Z	92,07	111,0	165,0	15	Ø85,72x18L	66,0	57,0	46,0

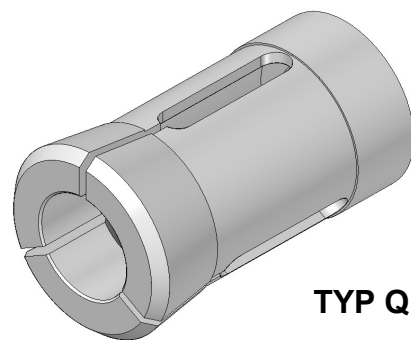
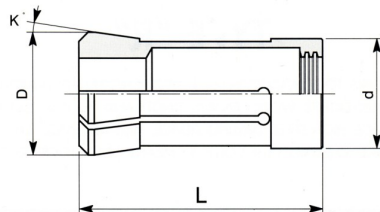
KLEŠTINY PRO VÍCEVŘETENOVÉ AUTOMATY

WICKMAN
 PODÁVACÍ


TYP L



Stroj	Kod	sklad	E - č.	provedení	d	D	L	K°	závit	X max.		
										●	⬡	■
1" - 6 M	L1203190	●	9276-E	L	31,0	31,9	133,0	-	Ø30,07x24záv"L	25,0	22,0	18,0
1" - V.30	L1203810	-	-	L	37,4	38,0	114,3	-	Ø35x1záv"L	30,0	26,0	21,0
32 MM-8 MC	L2503960	-	-	L	38,9	39,6	120,0	-	Ø36,1x24záv"L	31,0	27,0	22,0
1" 3/8-6 M, 1" 3/8-5 M	L1204280	-	9318-E	L	41,5	42,84	118,0	-	Ø40,46x22záv"L	36,0	31,0	25,0
1" 3/4-6 M, 1" 3/4-5 M	L1205220	-	9362-E	L	51,5	52,21	127,0	-	Ø49,98x22záv"L	44,0	38,0	31,0
2" 1/4-6 M	L1206510	-	9409-E	L	64,3	65,1	171,0	-	Ø62,509x22záv"L	57,0	49,0	40,0
2" 1/4-5 M	L1206511	-	-	L	64,3	65,1	139,0	-	Ø62,7x22záv"L	57,0	49,0	40,0
2" 5/8-6 M	L1207600	-	-	L	74,0	76,0	179,0	-	Ø73x24záv"L	66,0	57,0	46,0

WICKMAN
 PICK-UP


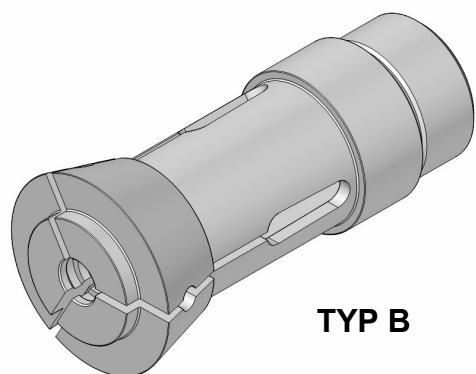
TYP Q

Stroj	Kod	sklad	E - č.	provedení	d	D	L	K°	závit	X max.		
										●	⬡	■
1" - 6 M	Q0003550	●	-	L	35,5	40,0	80,0	8	AtcB Ø27x2,7 - 30°	32,0	27,0	22,0
	Q0003551	-	-	L	35,5	40,0	80,0	8	AtcB Ø27x2,7 - 30°	32,0	27,0	22,0
1" 3/8	Q0004700	-	-	L	47,0	52,5	73,0	8	AtcB Ø29x2,7 - 30°	42,0	36,0	29,0
1" 3/4	Q0004701	-	-	L	47,0	52,5	73,0	8	AtcB Ø29x2,7 - 30°	42,0	36,0	29,0

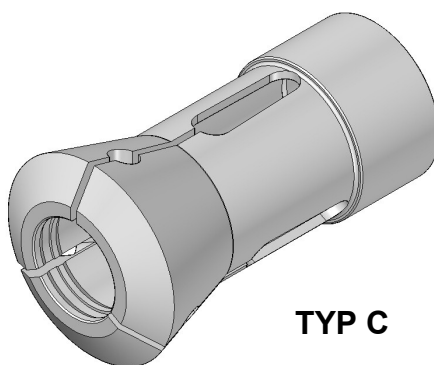
KLEŠTINY PRO VÍCEVŘETENOVÉ AUTOMATY

TORNOS

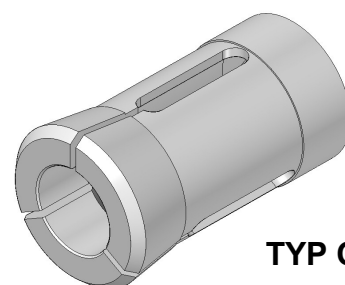
UPÍNACÍ



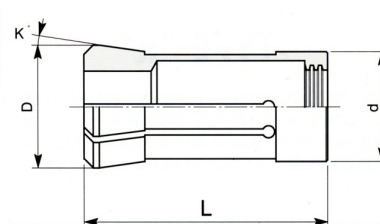
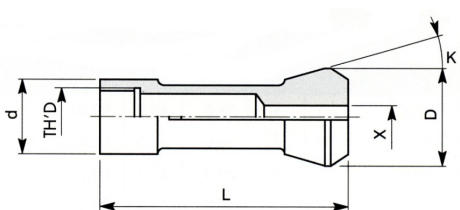
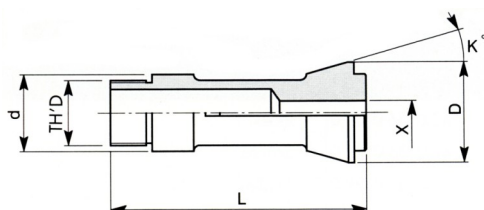
TYP B



TYP C



TYP Q



Stroj	Kod	sklad	E - č.	provedení	d	D	L	K°	závit	X max.		
										●	⬡	■
AS 14	C1302500	-	9001-E	R	25,0	35,0	75,0	15°	M22x1	14,0	11,0	9,0
SAS16	B1302500	-	9021-E	R	25,0	35,0	94,0	15°30'	M25x1	16,0	14,0	11,0
BS 20 B	C1303600	-	9020-E	R	36,0	45,0	107,0	15°30'	M33x1,25	20,0	17,0	14,0
Multi DECO 20/6	B1103400	●	9012-E	R	34,0	42,0	90,0	16°	M30x1L	20,0	17,0	14,0
Multi DECO 26/6 Multi DECO 32/6	B1304600	●	-	R	46,0	60,3	120,0	15°	M40x1,5L	26,0	22,0	18,0

TORNOS

PODÁVACÍ

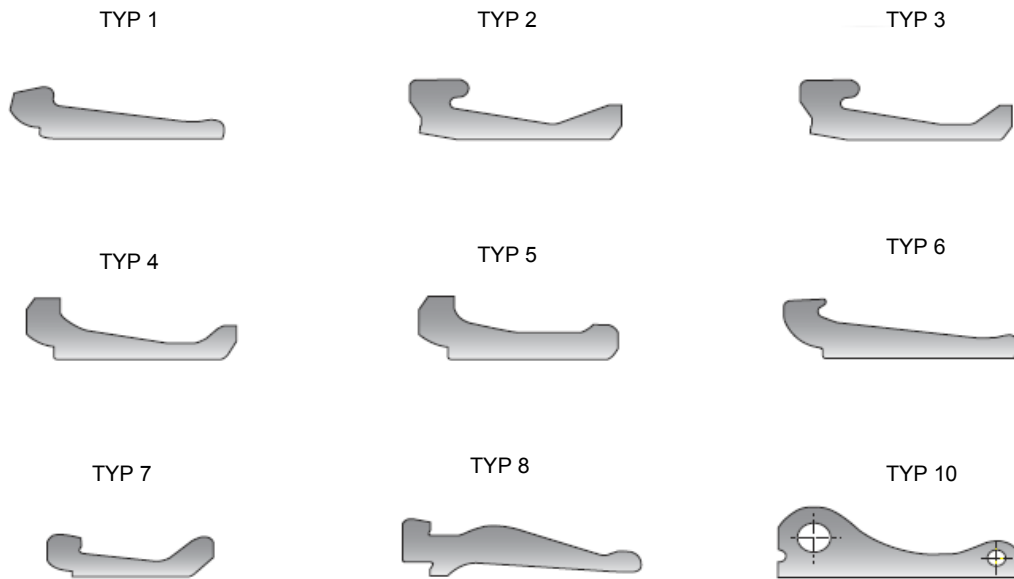
Stroj	Kod	sklad	E - č.	provedení	d	D	L	K°	závit	X max.		
										●	⬡	■
AS 14	L1301800	-	9251-E	L	17,5	18,0	70,0	-	M16x0,75	14,0	11,0	9,0
SAS16	L1302280	-	9265-E	L	20,5	22,8	98,0	-	M20x0,75	16,0	14,0	11,0
BS 20 B	L1302770	-	9266-E	L	25,3	27,7	116,0	-	M25x1	20,0	17,0	14,0

TORNOS

PICK-UP

Stroj	Kod	sklad	E - č.	provedení	d	D	L	K°	závit	X max.		
										●	⬡	■
Multi DECO 20/6	Q0002800	●	-	L	28,0	32,0	73,0	8	AtcB	24,5	21,0	17,0
Multi DECO 26/6	Q0003550	●	-	L	35,5	40,0	80,0	8	AtcB Ø27x2,7 - 30°	32,0	27,0	22,0

UPÍNACÍ PALCE PRO VÍCEVŘETENOVÉ AUTOMATY



Výrobce	Stroj	Sklad	Typ	Cod	Síla	Délka
GILDEMEISTER	AS16	●	1	M1102000	9,0	67,5
GILDEMEISTER	GM16	●	1	M1101600	9,0	64,5
GILDEMEISTER	GS20	●	1	M1102002	11,5	67,85
GILDEMEISTER	GS25	●	5	M1102500	18,0	68,5
GILDEMEISTER	AS25	●	5	M1102501	20,0	65,0
GILDEMEISTER	AS32	●	2	M1103200	24,0	73,0
GILDEMEISTER	AS32	●	3	M1103201	24,0	73,0
GILDEMEISTER	AS32	●	4	M1103202	24,0	73,0
GILDEMEISTER	AS32	●	4	M1103203	24,0	66,0
GILDEMEISTER	GM32	●	6	M1103204	19,5	102,0
GILDEMEISTER	GM42	●	6	M1104200	25,0	103,7
GILDEMEISTER	AS48	●	2	M1104800	30,0	73,0
GILDEMEISTER	AS48	●	3	M1104801	30,0	80,0
GILDEMEISTER	AS48	●	4	M1104802	30,0	80,0
GILDEMEISTER	AS48	●	5	M1104803	30,0	74,0
GILDEMEISTER	AS48	●	2	M1104804	30,0	80,0
GILDEMEISTER	AS67	●	4	M1106700	38,0	87,0
WICKMAN	5/8"	●	10	M1201580	18,25	56,35
WICKMAN	1"	●	10	M1202540	18,25	77,00
WICKMAN	1"3/8	●	10	M1203490	27,78	100,00
SCHÜTTE	SE16	●	7	M2201600	13,50	58,00
SCHÜTTE	SG18	●	1	M2201800	11,8	67,0
SCHÜTTE	SE-SD25	●	7	M2202500	13,5	59,0
SCHÜTTE	SD32	●	8	M2203200	18,0	93,0
SCHÜTTE	SD63	●	8	M2206300	20,0	121,0